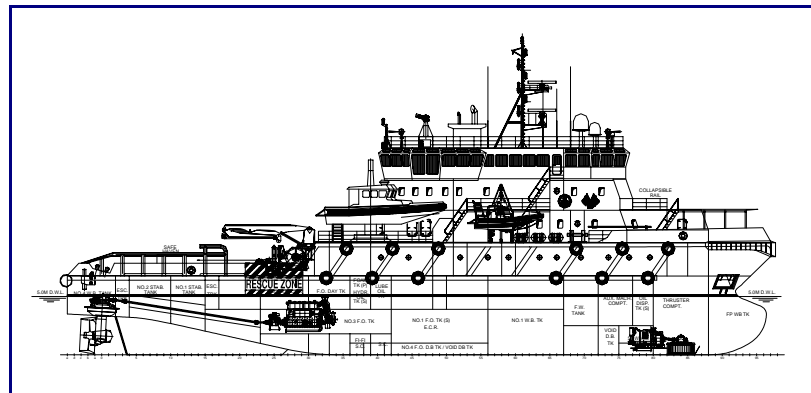


TOWING AND OFFSHORE SUPPORT VESSEL P1126 PROJECT

Classification	LR +A1 Towing and Offshore Support Vessel FiFi Class 1 + DP
LOA	60.0 m
Beam max.	13.8 m
Moulded depth	6.8 m
Draft	5.0 m
Deadweight	1,180 t
Main engines	Niigata 6MG28HLX; 2 x 1838 kW
Propulsion	2 x Niigata Z-Pellers Azimuth Thrusters
Side thruster	Kawasaki
Bollard pull	50 t
Fi-Fi system	2 x 1,440 cub.m/h; 15 Bar; 2 x fire monitor (water + foam + water spray)
Fuel oil	350 cub.m
Fresh water	150 cub.m
Foam	7 cub.m
Dispersant	7 cub.m
Speed	14.0 kn
Crew	29
Survivors or passengers	142



Design is developed in cooperation with Blumarlin International (Singapore)